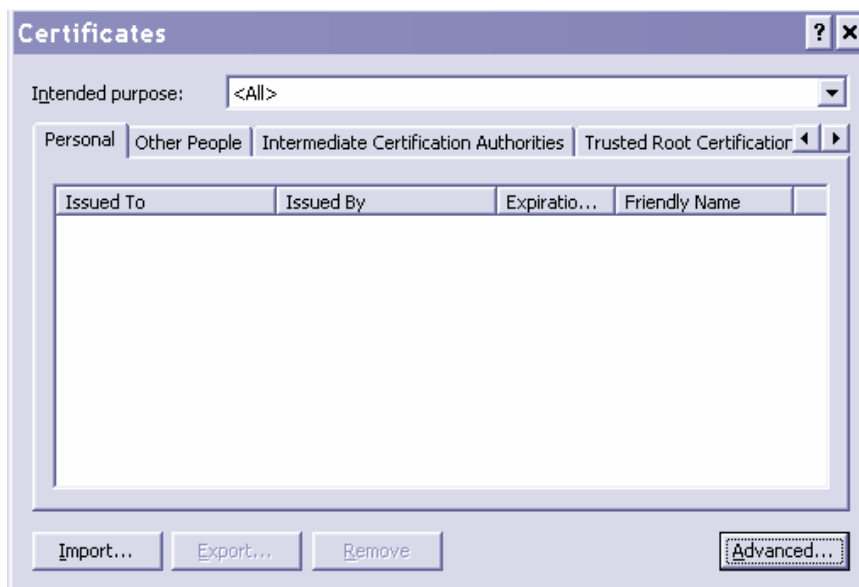


Setup Instructions for Secure POP3/IMAP over Windows XP

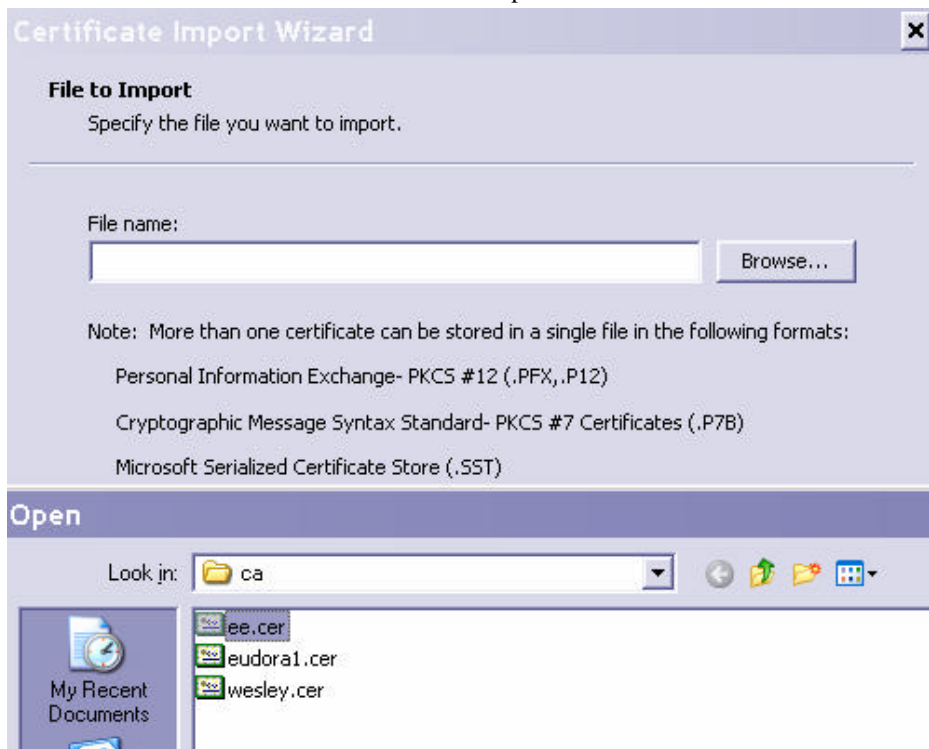
Note: If you have problem on setting up, please contact ITU or email: helpdesk@ee.usyd.edu.au

Step 1. Install Root CA certificate on your PC.

Click “Start” → “Control Panel” → “Internet Options” → “Contents” → “Certificates” → “import...”



Click “ Browse” → Select “ee.cer” → Click “ Open” → click “ Next” .

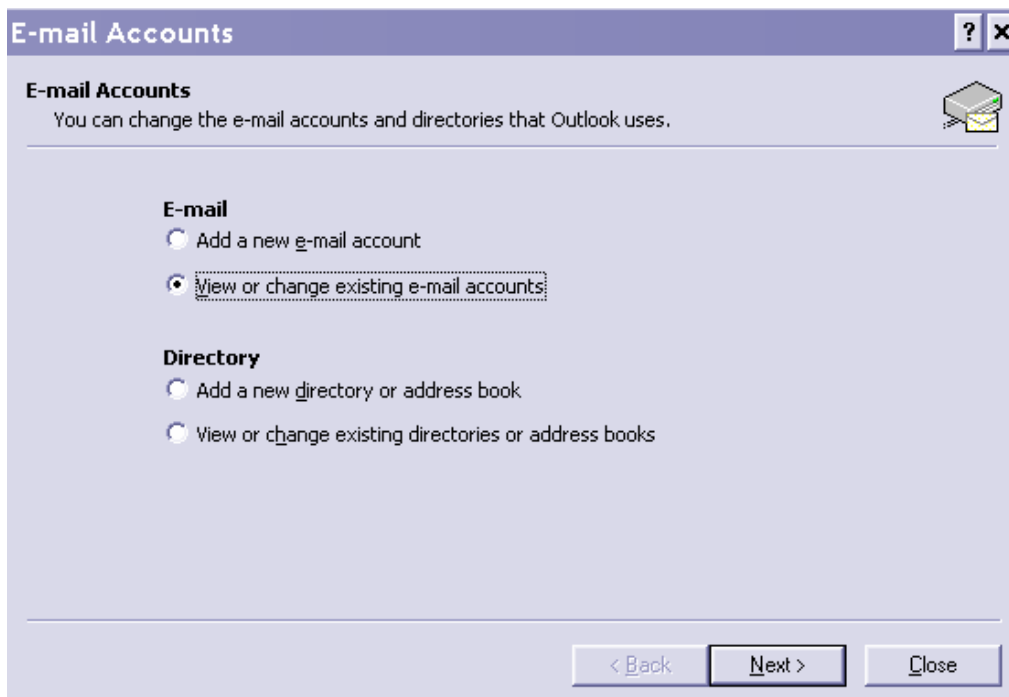


When prompted where the certificate should be installed, select “Automatically ...” ., then “ Next” → “ finish” . Input password “opnssl” when needed. Sytem will tell you the certificate has been installed successfully. Then click “ OK” button to quit the control panel.



Step 2. Install Secure POP3/IMAP on Outlook.

Start Outlook, then click “ Tools” → “ Email accounts” → “ Next”



Select your current email account and click “ Change” button, then click on “More Settings...”.

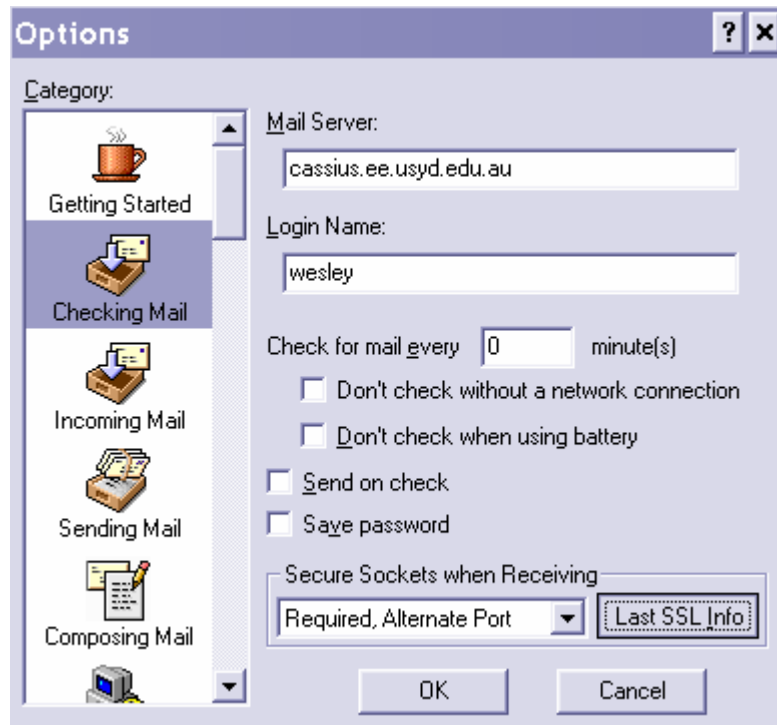
The screenshot shows the 'E-mail Accounts' dialog box with the 'Internet E-mail Settings (POP3)' tab selected. The window title is 'E-mail Accounts' and it has standard Windows window controls. Below the title bar, there is a sub-header 'Internet E-mail Settings (POP3)' and a note: 'Each of these settings are required to get your e-mail account working.' The dialog is divided into four sections: 'User Information', 'Server Information', 'Logon Information', and 'Test Settings'. 'User Information' contains 'Your Name' (Wesley Wu) and 'E-mail Address' (wesley@ee.usyd.edu.au). 'Server Information' contains 'Incoming mail server (POP3)' (cassius.ee.usyd.edu.au) and 'Outgoing mail server (SMTP)' (129.78.13.49). 'Logon Information' contains 'User Name' (wesley), 'Password' (masked with asterisks), a checked 'Remember password' checkbox, and an unchecked 'Log on using Secure Password Authentication (SPA)' checkbox. 'Test Settings' contains a 'Test Account Settings ...' button and a 'More Settings ...' button. At the bottom, there are '< Back', 'Next >', and 'Cancel' buttons.

Select “Advanced”, click check box on “This server requires a secure connection (SSL)” under the POP3, then “ OK” to finish the setup.

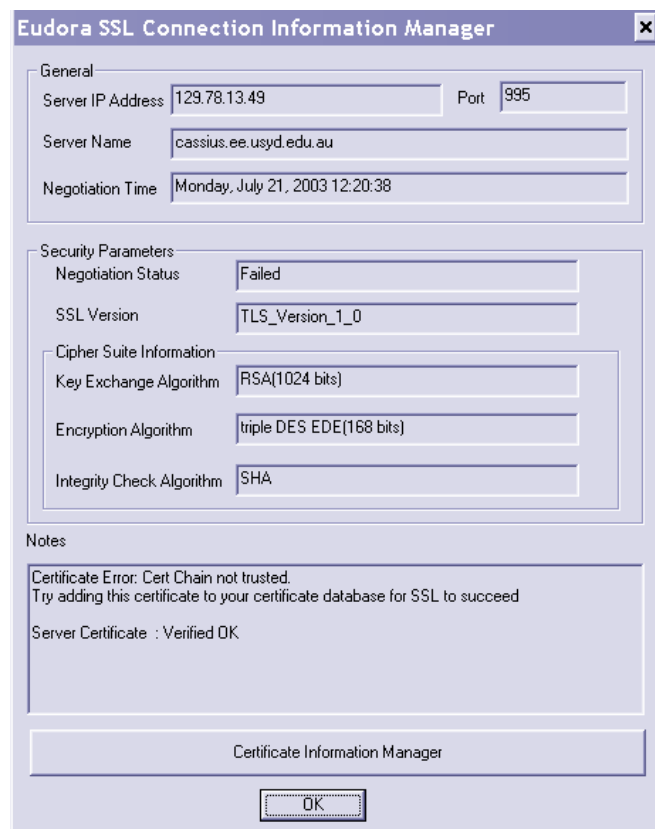
The screenshot shows the 'Internet E-mail Settings' dialog box with the 'Advanced' tab selected. The window title is 'Internet E-mail Settings' and it has standard Windows window controls. The dialog has four tabs: 'General', 'Outgoing Server', 'Connection', and 'Advanced'. The 'Advanced' tab is active and contains the following settings: 'Server Port Numbers' section with 'Incoming server (POP3):' set to 995 and a 'Use Defaults' button, and a checked checkbox 'This server requires a secure connection (SSL)'; 'Outgoing server (SMTP):' set to 25 and an unchecked checkbox 'This server requires a secure connection (SSL)'; 'Server Timeouts' section with a slider between 'Short' and 'Long' (1 minute); and 'Delivery' section with an unchecked checkbox 'Leave a copy of messages on the server', and two sub-options: 'Remove from server after 10 days' (unchecked) and 'Remove from server when deleted from 'Deleted Items'' (unchecked). At the bottom, there are 'OK' and 'Cancel' buttons.

Step 3. Install Secure POP3/IMAP on Eudora:

Click “Tools” → “options” → “Checking Mail”, select “Required, Alternate Port”, then click “Last SSL info”.



Normally, system will tell you haven't done any SSL negotiation before. To solve this problem, click “OK” button to quit the menu settings and then click “Check Mail” to try to receive any new incoming mail. You will fail to get it and wait for it time out. Then repeat this step again. Now you will get a window saying:



Click on “ Certificate Information Manager” → “import certificate” → select “ee.cer” → “done”.

